

OPERATING INSTRUCTIONS

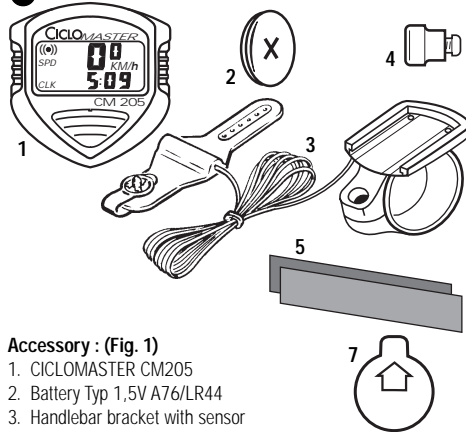
CICLOMASTER® CM 205

Congratulations!

You're the new owner of a high-precision electronic tachometer. The CICLOMASTER CM205 is equipped with the latest electronic and is weather-proofed.

Please read the instruction carefully.

1



Accessory : (Fig. 1)

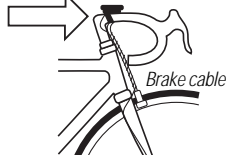
1. CICLOMASTER CM205
2. Battery Typ 1,5V A76/LR44
3. Handlebar bracket with sensor
4. Spoke magnet
5. Rubber shims (2 pieces)
6. Cable tie (without illustration)
(3 pieces, to fix the sensor cable to the fork)
7. Battery cover

MOUNTING:

Attach the mounting bracket to the handlebar using rubber shims for a secure fit. The arrow on the bracket must show in driving direction (Fig. 2).

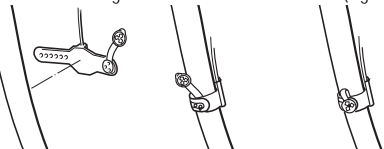
Attach the computer to the handlebar bracket by sliding forwards until it snaps firmly into place. To remove the computer, push unit backward.

2



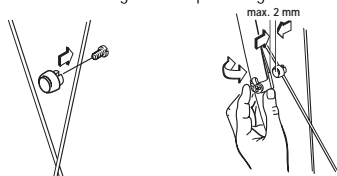
Wind the sensor cable around the brake cable and fork in a downward spiral. Attach the sensor to the fork so that the sensor and the spoke magnet are no more than 2 mm apart. The spoke magnet should pass the sensor directly over the circle dot at the end of the sensor housing. Install the sensor as shown in (Fig. 3)

3



Fit the magnet on the spoke opposite the sensor housing dot with 1 to 2 mm clearance. Do not overtighten the spoke magnet screw. (Fig. 4).

4



PREPARATION:

Installation of battery:

Use a flat blade screwdriver and lift out the battery cap carefully. Install a new 1.5V A76/LR44 alkaline battery into battery compartment with + pole facing up. Close the battery cap carefully. If LCD shows irregular figures, press AC reset button at back of computer. Display will show setting mode with KM/h or M/h toggling.

Press key to set your requirement in displayed KM/h or M/h.

Display will show wheel size in mm and after 4 seconds, unit digit of wheel size will scroll upwards. Press button to set the required displayed digit. Similarly press key to set all remaining wheel size digits.

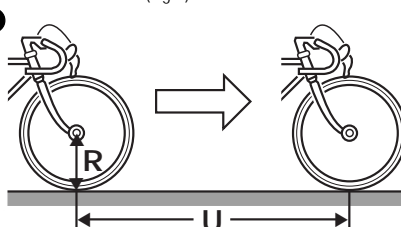
To skip this wheel size setting mode, you can press button in the initial 4 seconds before the wheel size unit digit starts to scroll.

You can set your wheel size by the following chart or actually measure the wheel size circumference.

wheel size:	650 x 20C	=	circumference:	1950 mm
wheel size:	26 x 1.25	=	circumference:	2030 mm
wheel size:	26 x 1.75	=	circumference:	2050 mm
wheel size:	700 x 20C	=	circumference:	2070 mm
wheel size:	26 x 2.00	=	circumference:	2080 mm
wheel size:	700 x 25C	=	circumference:	2090 mm
wheel size:	700 x 38	=	circumference:	2170 mm

To determine the exact wheel size, put corresponding marks on the front tire of the bicycle and on the floor or similar even surface. Roll bicycle along a straight line, have front wheel complete exactly one revolution. Mark new location and measure in millimeters the exact distance covered (Fig.5)

5



FUNCTIONS:

Pressing the button scrolls through all functions one after the other. All functions, except CLK, have an automatic start/stop, that means measurement starts with first revolution of the wheel and ends 4 seconds after last revolution of the wheel.

The sign (:) on the left hand side in the display starts blinking with the first revolution of the wheel.

SPD = current speed

Current speed is displayed in the top row of the LC display.
Range 0.0 - 107.9 km/h or 0.0 - 67.9 m/h

The following functions are displayed in the lower row of LC display.

CLK = Clock

24 hour clock with flashing second colon. To set the clock while in the clock mode, press button for over 2 seconds. Clock tenth hour digit will scroll 0, 1, 2 and back to 0 again. Press button to set required displayed digit. Similarly set remaining clock digits by button and unit will return to normal clock mode after setting.

AVS = Average speed

Range 0.0 - 99.9 km/h or 0.0 - 67 m/h
Reset see DST.

DST = Trip distance

Range 0.00 - 999.99 km or 0.00 - 625.00 miles.
Press button for over 4 seconds to reset DST and AVS.

ODO = Total distance (odometer)

Range 0 - 99999 km or 0 - 62500 miles

WHEEL SIZE SETTING:

KM or MILE selection

Pressing button for over 4 seconds will enter KM or mile selection mode followed by wheel size setting. User can change KM or mile and wheel size in this mode (see preparation).

Conversion M - KM automatically.

Attention:

If you change mile to KM and DST or ODO are 621.5 resp. 62150 miles or more, there will be an overflow in the display and DST and ODO are reset to zero.

CHANGE OF BATTERY:

Attention:

To preserve the settings and stored values, the battery may not be removed from the computer for more than 15 seconds.

Use a flat blade screwdriver and lift out the battery cap carefully. Remove the old battery and install a new 1.5V A76/LR44 alkaline battery into battery compartment with + pole facing up. Close the battery cap.

TROUBLE SHOOTING:

no display	check battery and battery contacts install battery properly replace battery
speed not displayed	check sensor/spoke magnet alignment sensor wire broken? computer firmly in place in
handlebar clamp?	
speed to high or low	check wheel size setting spoke magnet pass sensor housing alignment dot?
numbers not shown in full	press AC reset button in back of unit to restart computer
black display	temperature too hot or display exposed to direct sunlight too long
slow display segments	temperature outside of low operating limits -10 degrees C (-25 degrees F)
Digits difficult to read	replace battery

WARRANTY:

We provide a 12 month warranty for the CICLOMASTER CM205. The warranty is limited to material and manufacturing defects, the batteries are excluded from the warranty.

The warranty is only valid if

- the device was treated carefully and in accordance with the instructions
- the device is mailed together with the sales slip (dated) and all accessories, postage paid, to
K.W. Hochschorner GmbH
Konrad-Zuse-Bogen 8
D-82152 Krailling
Servicetelefon: +49(0)180/500 47 43 (DM 0,24/min)
Internet: <http://www.ciclosport.de>
e-mail: ciclosport@ciclosport.de

Before sending back the device please reread the operating instructions carefully. If the warranty claims are justified a replacement or the repaired device will be returned by mail free of charge.

REPAIR:

If the device is sent in for repair and a warranty claims is not justified, a repair fee of DM 25.00 is automatically charged. If the cost of repair is any higher you will be notified first. The return mailing of the device is paid for by the recipient.