



# 2001-02 PURE SYSTEM SERVICE GUIDE

## Table of Contents

Tools Needed .....	2
Removing the Lower Legs .....	2
Removing the Climb-it Control Knob .....	3
Removing Compression and Rebound Assemblies .....	4
Reinstalling the Rebound Assembly and Pure Tube .....	6
Adding Oil to the Pure Tube .....	6
Cycling the Shaft .....	7
Testing the Pure System .....	8
Re-installing the Lower Legs .....	8
Oil Bath .....	8
Warranty .....	9
2002 Psylo SL .....	10
2002 Psylo Race .....	11
2002 SID SL/Race .....	12
2001 Psylo SL .....	13
2001 Psylo Race .....	14
2001 SID SL .....	15
International Distributors .....	16

For exploded diagram and part number information, refer to the 2002 Spare Parts Catalog, P/N 950-006157-00. Contact your local distributor or visit the RockShox website at [www.rockshox.com](http://www.rockshox.com) for ordering information.

Information contained in this publication is subject to change at anytime without prior notice. For the latest technical information, visit our website at [www.rockshox.com](http://www.rockshox.com). Names used in this manual may be trademarks or registered trademarks of others.




## TOOLS NEEDED

- Safety Glasses
- 2 and 5 mm Hex Wrench
- 10 mm Hex Socket (for SID SL and Psylo Race)
- Plastic Faced Mallet
- 24 mm Socket and Ratchet
- Snap Ring Pliers
- Dental Pick or Magnetic Screw Driver
- 50 cc Syringe (may be purchased at a motorcycle shop or medical supply store)
- Oil Pan
- Judy Butter
- 5 wt. oil


## REMOVING THE LOWER LEGS

**HINT: RIGHT AND LEFT SIDE IS DETERMINED AS IF YOU WERE ON THE BIKE.**

1. **For SID SL and Psylo Race:** Remove the air pressure from the fork.
  - a. Remove the negative air valve cover from the bottom left lower leg. Depress the schrader air valve to remove the negative air pressure
  - b. Remove the positive air valve cover from the top of the left upper tube. Depress the schrader air valve to remove the positive air pressure.

 **NOTE: A SMALL AMOUNT OF OIL MAY COME OUT WHEN RELEASING THE AIR.**

2. Remove the rebound adjuster knob from the right shaft bolt. **For Psylo SL:** Use a 5mm hex wrench to unscrew both shaft bolts four turns. **For SID SL and Psylo Race:** Use a 5mm hex wrench to unscrew the right shaft bolt four turns and a 10 mm socket to unscrew the air nut on the left side four turns.

 **Note:** Fully open the rebound adjuster (counterclockwise rotation). This will make it easier for steps where you must cycle the rebound shaft.



3. Using a dead blow mallet, tap the shaft bolts. This releases the pressure fit between the lower legs and the shafts. Remove both shaft bolts (or shaft bolt and air nut) completely.

4. Slide lower legs off.



**NOTE: LOWER LEGS HAVE AN OIL BATH WHICH WILL SPILL OUT AS YOU REMOVE THE LEGS. HAVE AN OIL PAN READY TO CATCH THE OIL.**



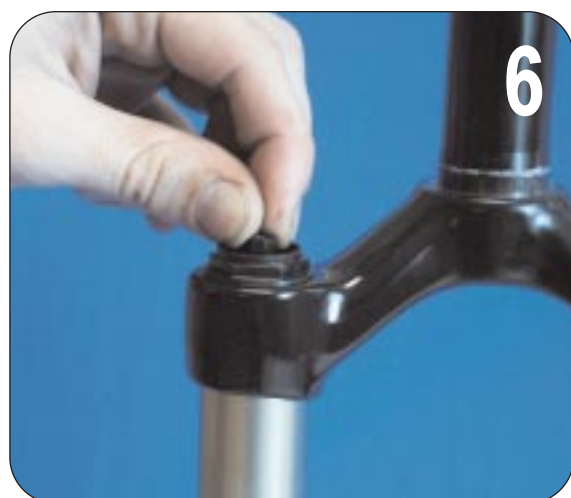
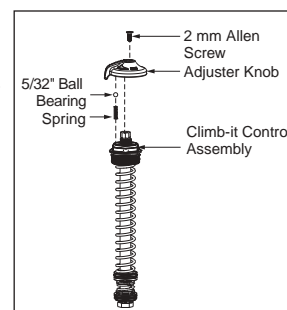
## REMOVING THE CLIMB-IT CONTROL KNOB

5. Using a 2 mm allen wrench, remove the screw located in the center of the Climb-it control adjuster knob.
  - a. After removing the screw, remove the adjuster knob (fig. 1).



**NOTE: A 5/32-INCH BALL BEARING RESTS ON TOP OF THE CLIMB-IT CONTROL ASSEMBLY.**

- b. Remove the 5/32-inch ball bearing. Note which hole the bearing was removed from. If you lose the bearing you can use a 3/32-inch (2 mm) headset bearing
  - c. Remove the spring using a dental pick or magnetized screwdriver. Note which hole the spring was removed from.

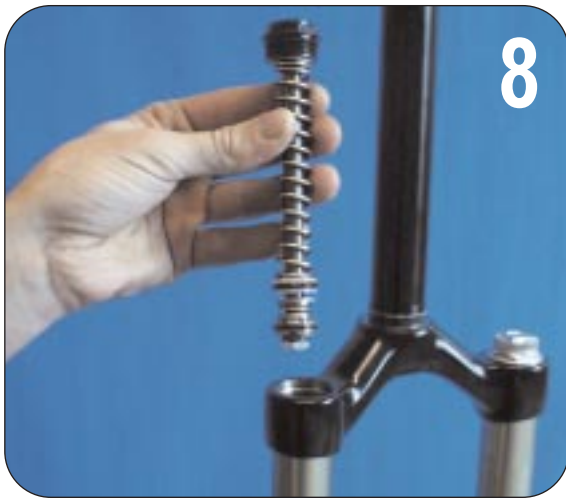


6. With your fingers, unscrew the lock-out rod and remove the rod completely.



## REMOVING COMPRESSION AND REBOUND ASSEMBLIES

- Using 24 mm socket and ratchet, remove the top cap.



- Pull out the compression assembly.



Note: the assembly has two o-rings that make the assembly difficult to remove. Use a firm grip and watch for oil as the assembly comes out.

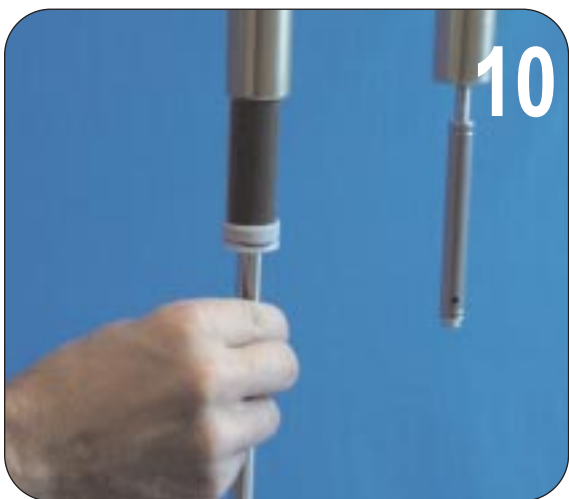


- Using snap ring pliers, remove the snap ring located underneath the right upper tube.



Note: Do NOT angle the upper tubes horizontally, as there is oil inside. The upper tube should stay vertical or no more than 45 degrees from a vertical position.

**HINT: THE RIGHT SIDE IS DETERMINED AS IF YOU WERE ON THE BIKE.**



10. With the snap ring removed and the fork in a vertical position, remove the Pure tube (with rebound shaft) from the right side of the fork.



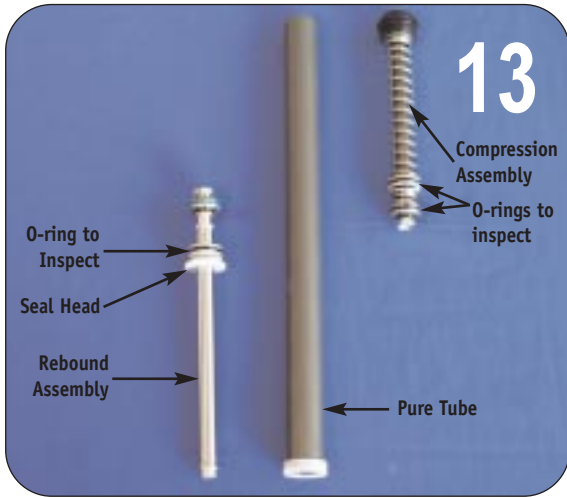
**NOTE: THE PURE TUBE HAS OIL INSIDE.**



11. Using an oil pan, properly dispose of the oil inside the Pure tube.



12. With the oil disposed, remove the rebound assembly by holding the Pure tube in one hand and the rebound assembly shaft in the other hand. Any remaining oil will come out when you separate the two pieces.



- The rebound assembly, the Pure tube and the compression assembly make up the Pure system (right side of the fork). Inspect all o-rings for cuts, tears or nicks. If necessary, replace any o-rings using the Pure System O-ring Service Kit (PN 110-005565-00).

## REINSTALLING THE REBOUND ASSEMBLY AND PURE TUBE

- Re-install the rebound assembly into the Pure tube. Ensure the rebound assembly's white seal head slides all the way inside the Pure tube.
- Insert the Pure tube assembly into the right upper tube of the fork.
  - TIP: THE RIGHT SIDE IS DETERMINED AS IF YOU WERE ON THE BIKE.**
- With the Pure tube assembly inside the upper tube, re-install the snap ring. Ensure the rebound shaft is fully extended as far out as it will go.

## ADDING OIL TO THE PURE TUBE



- With the fork in a vertical position, add RockShox 5 wt. oil until the oil level is a 1/2-inch from the top of the Pure tube. Ensure the rebound shaft at the bottom of the upper tube is fully extended.



- Install a syringe on the top hole of the compression assembly and firmly push the entire assembly (with syringe) into the Pure tube by holding on the compression top cap.
  - HINT: SLIGHTLY AGITATE THE ASSEMBLY IF YOU ENCOUNTER ANY RESISTANCE.**
  - NOTE: AS YOU PUSH THE ASSEMBLY DOWN, OIL IS DISPLACED FROM THE PURE TUBE INTO THE SYRINGE. PLACE A RAG OVER THE TOP OF THE SYRINGE TO CATCH ANY OIL THAT MAY SHOOT OUT.**
- Using an adjustable wrench, tighten the top cap firmly. Torque to 40 in-lb. (4.52 Nm).
  - NOTE: THIS TOP CAP IS PLASTIC AND MAY STRIP IF TOO MUCH FORCE IS APPLIED WHEN TIGHTENING.**

## CYCLING THE SHAFT



20. With the top cap tightened, place your hand on top of the syringe while holding the rebound shaft with your other hand. Slowly cycle the shaft up and down twelve times. On the last cycle make sure the shaft is fully extended. As you cycle the shaft you will see air bubbles rise to the top of the syringe. On the twelfth cycle there should not be any air bubbles rising to the top. When you finish cycling the shaft, remove the syringe (oil will leak out of the syringe).

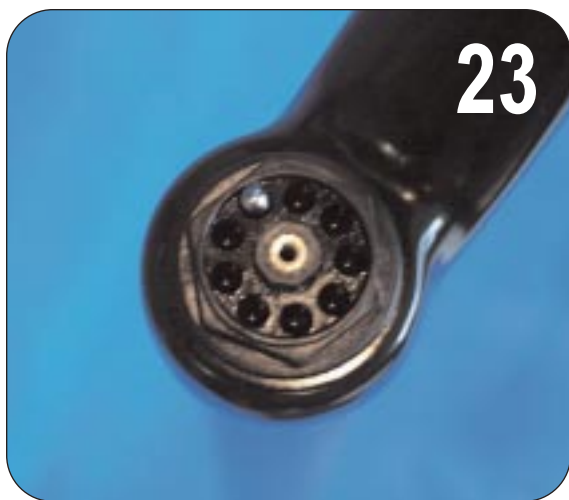


**NOTE: THIS STEP BLEEDS ALL THE AIR OUT OF THE PURE SYSTEM.**

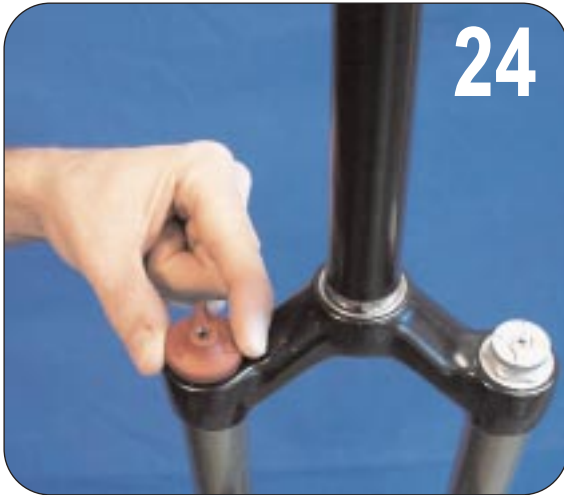
**TIP: TURN THE ADJUSTER FULL COUNTERCLOCKWISE.**



21. Place the lock-out rod on top of the top cap center hole. Let the lock-out rod settle in by itself. This prevents air from forcing its way into the system. Oil will be displaced as the rod settles into the hole. Use a lint-free cloth to absorb any displaced oil.
22. Hand-tighten the rod until it stops. Using an air compressor, blow out any oil left on top of the top cap and inside the top cap holes. If you do not have an air compressor, use a lint-free cloth to clean the excess oil. Excess oil that is not cleaned up will give the *appearance* of a leaking Pure system.



23. Apply a small amount of grease to the top of the spring. Insert the spring into the hole set at six o'clock, closest to the back of the crown. If the hole isn't lined up at six o'clock, use the hole that is closest to six o'clock on the back of the crown. Once the spring is installed, insert the 5/32-inch ball bearing into the same hole as the spring (on top of spring). The grease applied to the top of the spring will ensure the ball bearing does not fall off.



24

24. Place the Climb-it control adjuster knob on top of the compression assembly. Ensure the adjuster knob is facing at a eight o'clock position toward the back of the fork (the adjuster knob's nub should be pressed against the back of the crown).
25. Using a 2 mm allen wrench, install the screw onto the top of the adjuster knob and compression assembly. The system will be in the locked out position when you are finished.

## TESTING THE PURE SYSTEM

26. While in the locked out position, test the Pure system by pushing up on the rebound shaft. The shaft should not compress.
27. Next, turn the Climb-it control knob 180 degrees. The rebound shaft should compress.
28. Leave the fork in the unlocked position when you are done testing.



29

## RE-INSTALLING THE LOWER LEGS

29. Ensure the lower legs are clean. Use a biodegradable solvent (Simple Green, Pedro's or equivalent) and a 12" (305 mm) long 1-1/4 inch diameter soft bristle bottle brush to clean the lower leg internals.
30. Slide the cleaned XXX seals and foam filters onto the upper tubes. Slide the lower legs onto the upper tubes until just before the lower bushing engages with the upper tubes.
31. Install foam ring and XXX seals, pressing the XXX seal flush with the lower leg assembly. A small cable tie between the upper tube and the seal will help eliminate air build-up behind the seal upon installation. Remove the cable tie following installation.



32

## OIL BATH

32. With the fork inverted, add the appropriate amount of oil in each leg for the oil bath lubrication (see below). Ensure that the oil goes into the leg and not the shaft.



**NOTE: TILTING THE FORK UPSIDE DOWN AT A 45 DEGREE ANGLE WORKS BEST.**

Fork	Amount of Oil
SID SL	10 cc 15 wt. oil (each leg)
Psylo SL	10 cc 5 wt. oil (right leg) 20 cc 5 wt. oil (top of the left upper tube)
Psylo Race	10 cc 5 wt. oil (each leg)



33. Slide the lower legs all the way onto the upper tubes until they engage the shafts.
34. Inspect the shaft bolt crush washers to ensure they are not deformed or flattened completely. If they are damaged, replace them with new crush washers.
35. **BEFORE** installing the hollow shaft bolt, insert the rebound adjuster knob into the damper and turn the rebound valve to the full clockwise position. Then remove the knob. **This prevents damage to the plastic rebound assembly in the shaft.**
35. Reinstall both shaft bolts (or shaft bolt and air nut) on the lower legs and ensure they engage the shafts. Torque the shaft bolts to 60 in-lb.
36. Reinstall the rebound adjuster into the right shaft bolt.
37. **For SID SL and Psylo Race:** Repressurize the fork according to the specifications found in your RockShox owner's manual.



FOR FURTHER INFORMATION VISIT OUR WEBSITE AT [WWW.ROCKSHOX.COM](http://WWW.ROCKSHOX.COM) OR CALL 1.800.677.7177. IF YOU LIVE OUTSIDE OF THE UNITED STATES, CONTACT THE ROCKSHOX DISTRIBUTOR IN YOUR COUNTRY.

## WARRANTY

RockShox, Inc. warrants its products for a period of one year from original date of purchase to be free from defects in materials or workmanship. Any RockShox product that is returned to the factory and is found by RockShox to be defective in materials or workmanship will be repaired or replaced at the option of RockShox, Inc. This warranty is the sole and exclusive remedy. RockShox shall not be held liable for any indirect, special, or consequential damages.

The warranty does not apply to products which have not been properly installed and adjusted according to RockShox installation instructions. The warranty does not cover any product that has been subject to misuse or whose serial number has been altered, defaced or removed. This warranty does not cover paint damage or modifications to the product. Proof of purchase is required.

### WARRANTY REPAIR

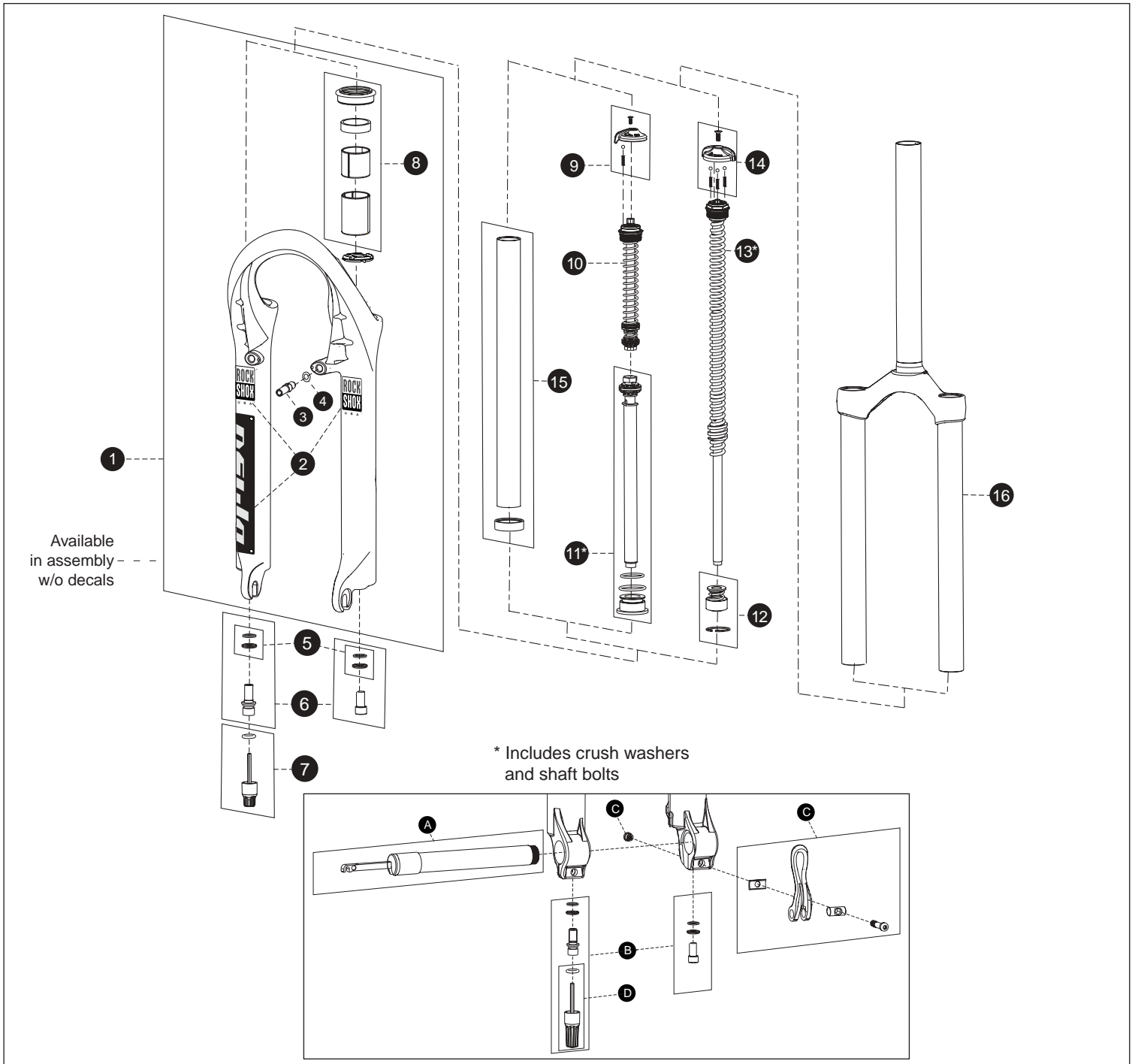
If for any reason it should be necessary to have warranty work done, return the product to the place of purchase. In the USA, Dealers should call for a Return Authorization number (RA#) prior to returning product.

Products returned for inspection must be sent freight prepaid and with proof of purchase to:

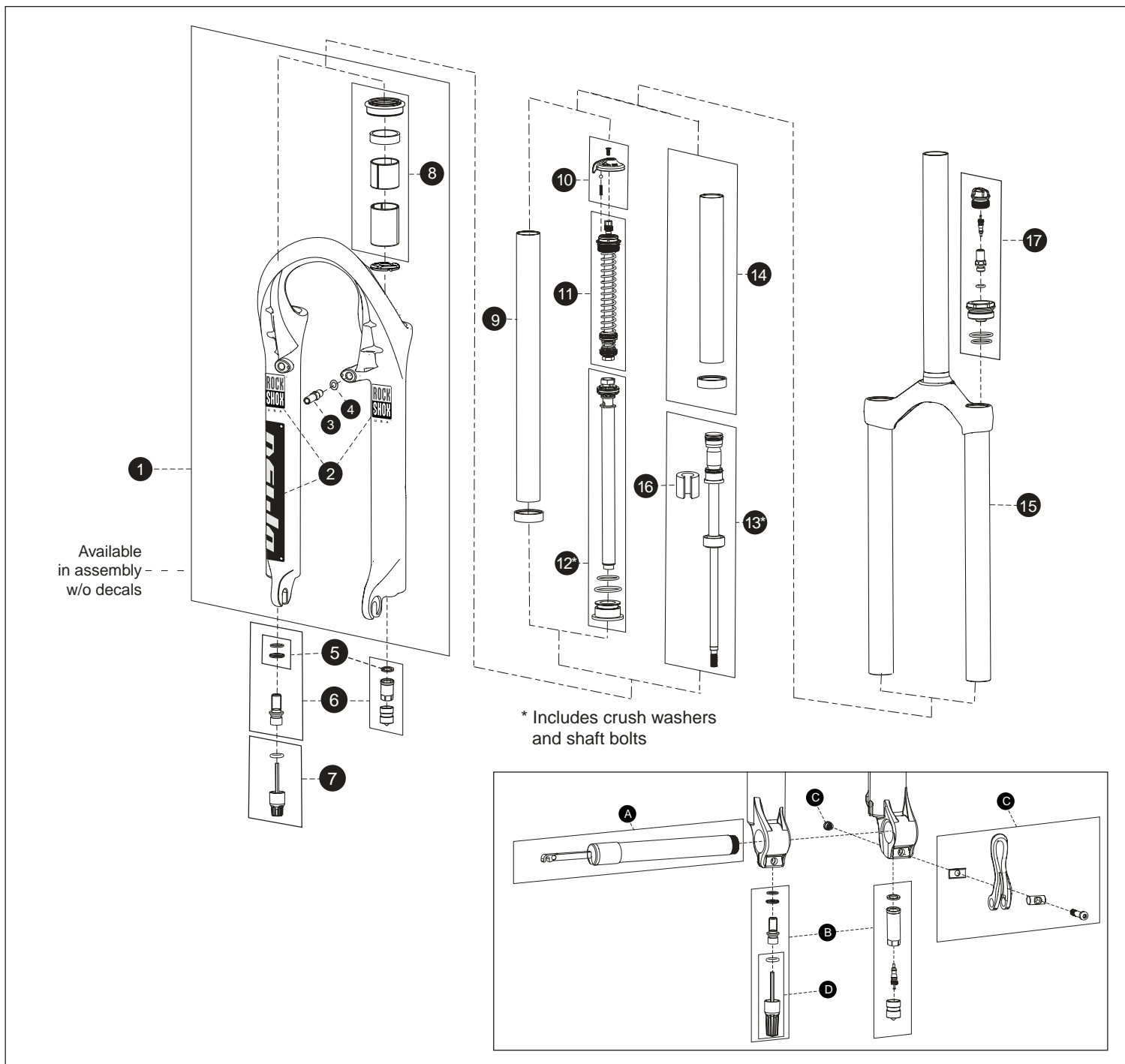
RockShox, Inc.  
1610 Garden of the Gods  
Colorado Spring, CO 80907

For more technical information, visit our website at [www.rockshox.com](http://www.rockshox.com). For toll-free technical support in the USA, call 1.800.677.7177.

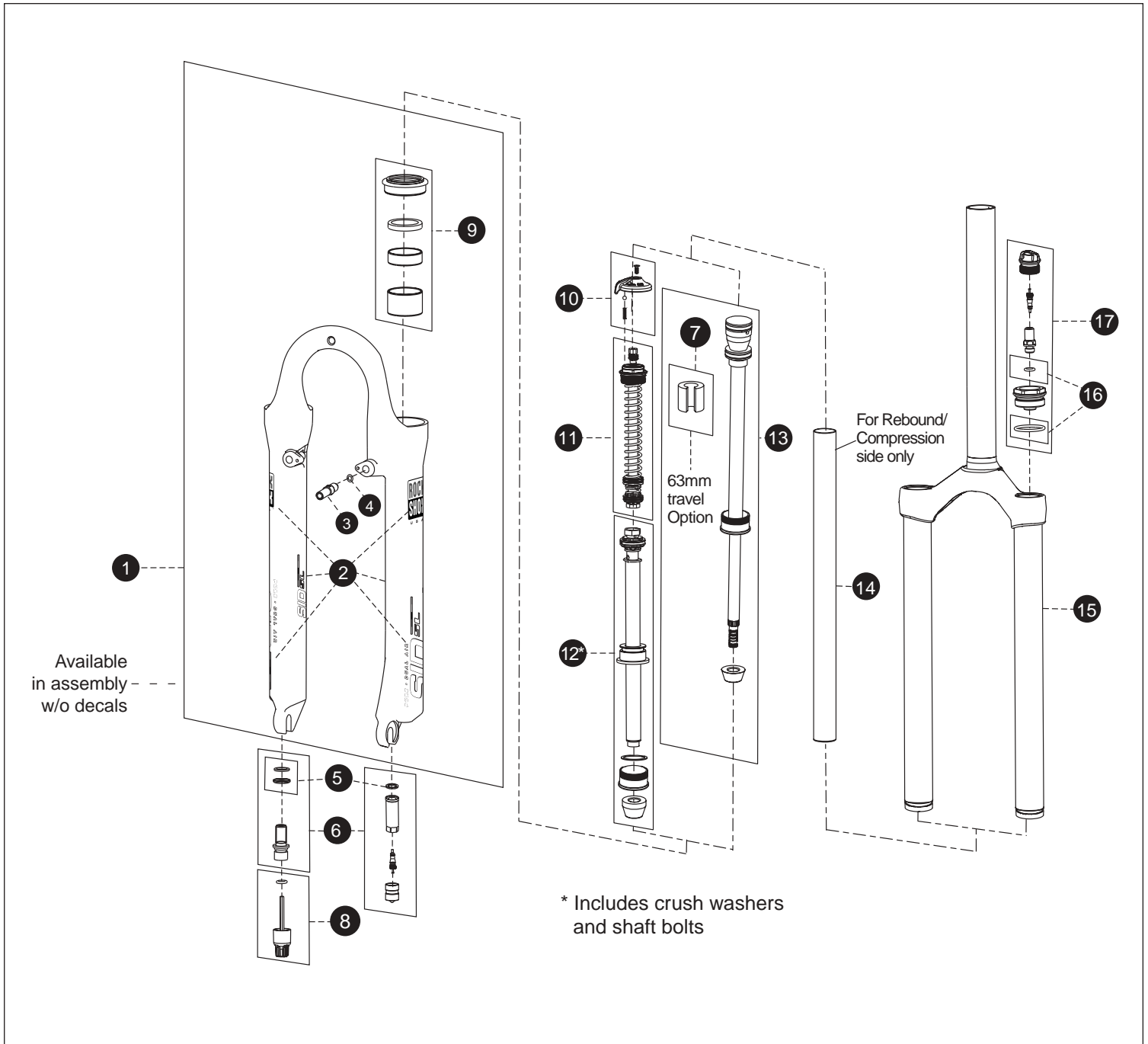
**Customers in countries other than the USA should contact their local dealer or distributor.**



1	Psylo LL, Conventional w/Boss, Black	110-006267-00	9	Climb-it Control Adjuster Knob	110-005558-00	<b>Tullio Hardware</b>		
	Psylo, Conventional w/Boss, Pearl White	110-006267-19	10	01 Psylo SL/Race Pure Compression Assy	110-005586-00	A	Tullio Axle Kit	110-005653-00
	Psylo Tullio LL, Disc Only, Black	110-006272-00	11	01 Psylo SL/Race Rebound Assembly	110-005589-00	B	Tullio External Hardware Kit	110-005652-00
	Psylo Tullio LL, Disc Only, Pearl White	110-006272-19	12	U-turn Base Plate Assembly Kit	110-006268-00	C	Tullio Lower Leg Hardware	110-005654-00
	Psylo LL, Disc Only Conventional, Black	110-006298-00	13	U-turn Assembly Kit, Soft	110-006270-01	D	Tullio Rebound Adjuster Knob Kit	110-006343-00
	Psylo LL, Disc Only Conv., Pearl White	110-006298-19		U-turn Assembly Kit, Medium	110-006270-02			
2	02 Psylo SL Decal Kit	110-006274-00		U-turn Assembly Kit, Firm	110-006270-03	<b>Not Shown:</b>		
3	Brake Post	48131	14	U-turn Adjuster Knob Kit	110-006269-00		Disc Brake Cable Accessory Kit	110-006344-00
4	Flat Washer	52261	15	Psylo Pure Tube	110-005557-00		Pure Rebuild Kit	110-006245-00
5	Crush Washer Kit	110-005552-00	16	Psylo SL Crwn/Str/Uppr, 1-1/8 Thrdless	110-005597-00		Pure Compression adjuster Rod Kit	110-006324-00
6	Hydra Air/Hydra Coil Ext.Hardware Kit	110-005651-00						
7	Psylo Conventional Rebound Adj. Knob	110-005603-00						
8	Psylo Revive Kit	110-006350-00						

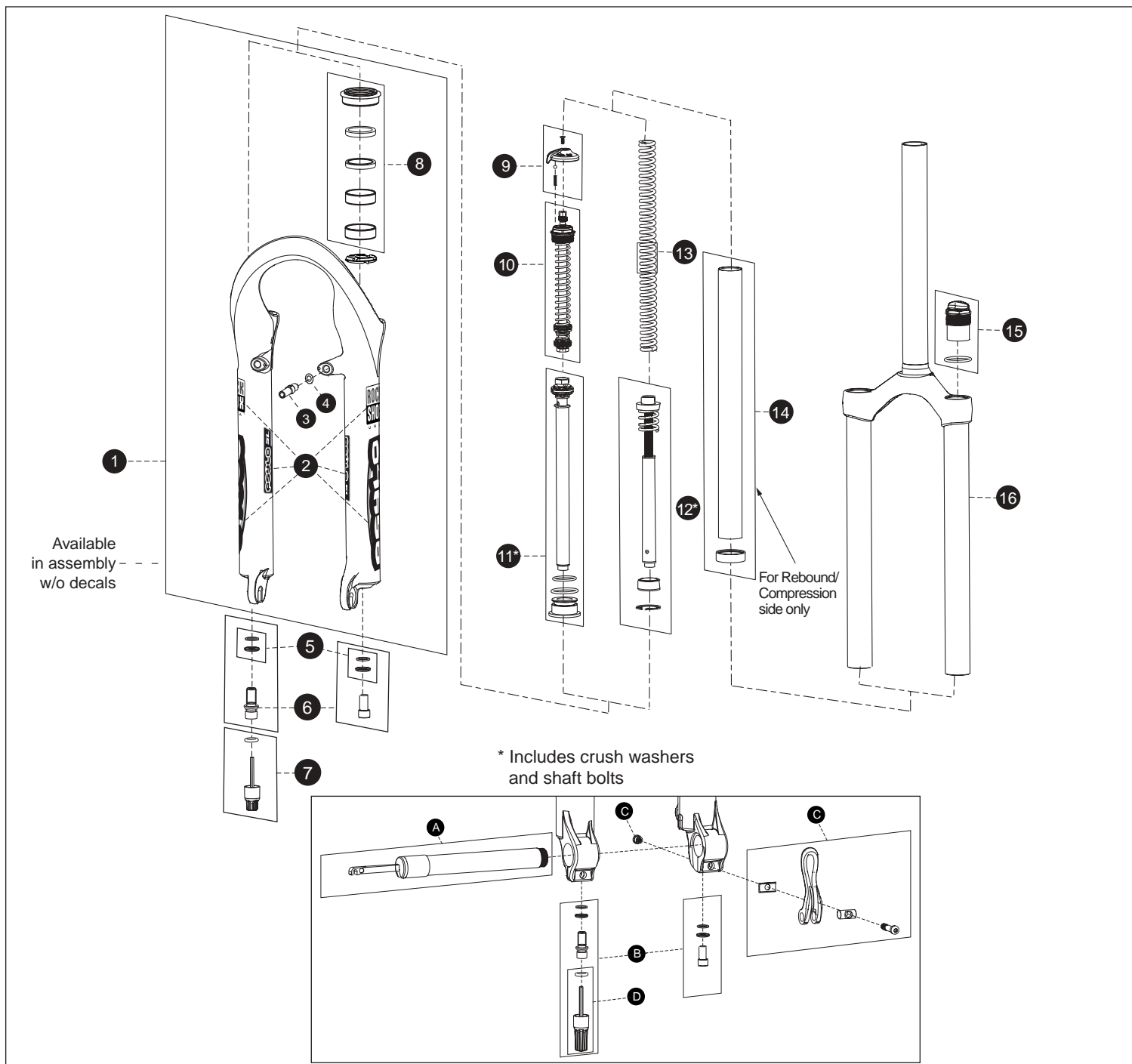


<b>1</b> Psylo LL, Conventional w/Boss, Elec. Gold	110-006267-14	<b>12</b> 01 Psylo SL/Race Rebound Assembly	110-005589-00	<b>D</b> Tullio Rebound Adjuster Knob Kit	110-006343-00
Psylo Tullio LL, Disc Only, Electric Gold	110-006272-14	<b>13</b> Psylo Race Negative Spring Assembly	110-005600-00	<b>Not Shown:</b>	
Psylo LL, Disc Only Conventional, Elec. Gold	110-006298-14	Psylo Race Neg. Spring Assy. (Tullio)	110-005647-00	Disc Brake Cable Accessory Kit	110-006344-00
<b>2</b> 02 Psylo Race Decal Kit	110-006275-00	<b>14</b> 01 Psylo Air Tube	110-005646-00	Schrader Air Valve Stem	200-005171-00
<b>3</b> Brake Post	48131	<b>15</b> Psylo Race Crwn/Str/Uppr, 1-1/8 Thrdless	110-005601-00	Schrader Air Cap	200-005172-00
<b>4</b> Flat Washer	52261	<b>16</b> All Travel Spacer Kit	110-005628-00	Schrader Valve Core	620-001907-00
<b>5</b> Crush Washer Kit	110-005552-00	<b>17</b> 02 Duke/Psylo Race Schrader Air Top Cap, Blk	110-006209-00	Pure Rebuild Kit	110-006245-00
<b>6</b> Dual Air External Hardware Kit	110-005650-00	02 Schrader Air Top Cap, Aluminum	110-006432-00	Pure Compression Adjuster Rod Kit	110-006324-00
<b>7</b> Psylo Conventional Rebound Adj. Knob	110-005603-00			Psylo Race Dual Air O-ring Kit	110-006402-00
<b>8</b> Psylo Revive Kit	110-006350-00				
<b>9</b> Psylo Pure Tube	110-005557-00	<b>Tullio Hardware</b>			
<b>10</b> Climb-it Control Adjuster Knob	110-005558-00	<b>A</b> Tullio Axle Kit	110-005653-00		
<b>11</b> 01 Psylo SL/Race Pure Compression Assy	110-005586-00	<b>B</b> Tullio External Hardware Kit	110-005652-00		
		<b>C</b> Tullio Lower Leg Hardware	110-005654-00		

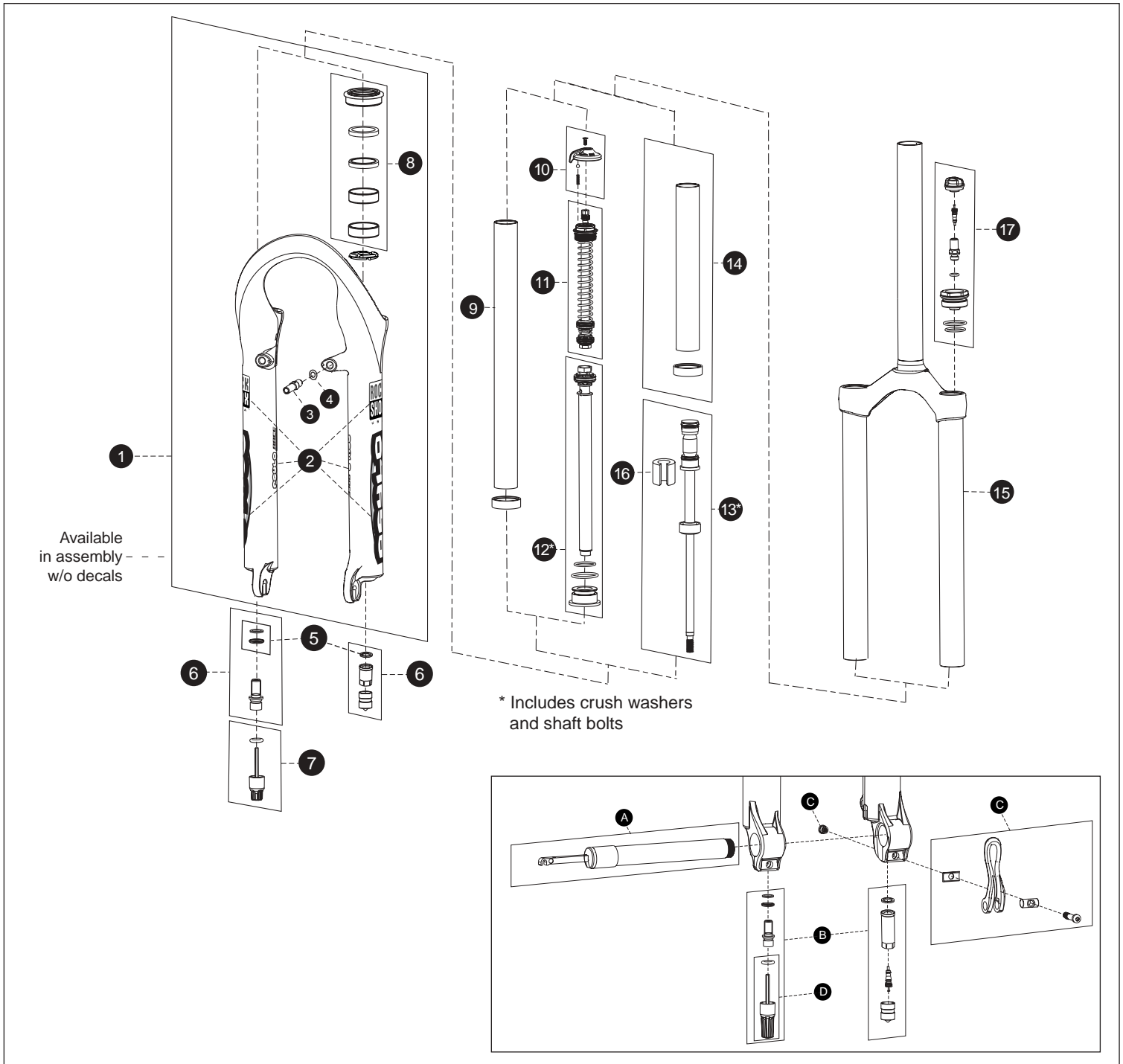


1	SID SL/Race Lower Leg Assy Black	110-005570-00	8	SID SL/ Psylo Conv. Rebound Adj. Knob	110-005603-00
	SID SL/Race Lower Leg Assy Red	110-005570-02	9	02 SID Revive Kit	110-006204-00
	SID SL/Race Lower Leg Assy SID Blue	110-005570-06	10	Climb-it Control Adjuster Knob	110-005558-00
	SID Race Lower Leg Assy Electric Blue	110-005570-16	11	SID SL/RacePure Compression Assy	110-005586-01
	SID SL/Race Lower Leg Assy (Silver)	110-006442-00	12	SID SL?Race Rebound Assembly	110-005589-01
	SID SL/Race Lower Leg Assy (Prl Wht)	110-006410-00	13	SID SL/Race Negative Spring Assembly	110-005587-00
2	02 SID SL Decal Kit	110-006235-00	14	Pure Tube SID	110-005557-01
	02 SID Race Decal Kit	110-006236-00	15	01 SID SL Crwn/Strr/Uprr 1-1/8 Thdls	110-005588-00
3	Brake Post	48131		02 SID Race Crwn/Strr/Uprr 1-1/8 Thrdls	110-006238-00
	Ti Brake Post	48132		01/02 SID Race CSU (TiNi) 1-1/8 Thdls (PrlWht)	110-006409-00
4	Flat Washer	52261	16	SID Top CapO-ring Service Kit	110-006176-00
5	Crush Washer Kit	110-005552-00	17	02 SID Top Cap (w/air valve)	110-006237-00
6	Dual Air External Hardware Kit	110-005650-00			
7	All Travel Spacer Kit	110-005628-00			

Not Shown	
Pure Rebuild Kit	110-006245-00
Pure Compression Adjuster Rod Kit	110-006324-00



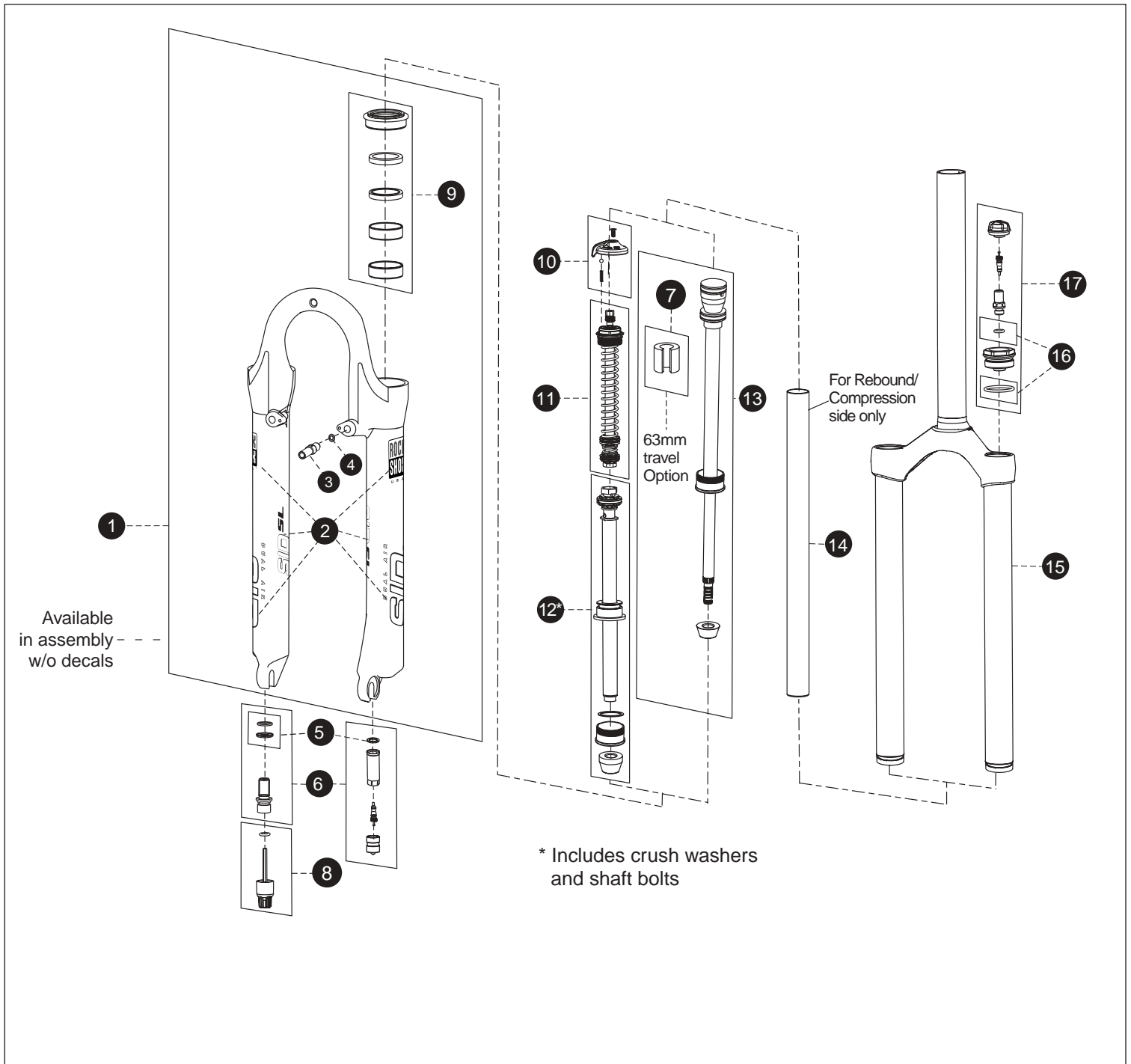
1	Psylo Standard LL, Black	110-006267-00	11	01 Psylo SL/Race Rebound Assembly	110-005589-00	<b>Tullio Hardware</b>		
	Psylo Standard LL, White	110-006267-19	12	Psylo XC/SL Plunger Assy	110-005591-00	A	Tullio Axle Kit	110-005653-00
	Psylo Tullio LL, Black	110-005573-00	13	01 Psylo XC/SL 31 lb/in Coil Spring (Slvr)	110-005592-07	B	Tullio External Hardware Kit	110-005652-00
	Psylo Tullio LL, White	110-005573-19		01 Psylo XC/SL 38 lb/in Coil Spring (Wht)	110-005592-00	C	Tullio Lower Leg Hardware	110-005654-00
2	02 Psylo SL Decal Kit	110-006274-00		01 Psylo XC/SL 45 lb/in Coil Spring (Ylw)	110-005592-01	D	Tullio Rebound Adjuster Knob Kit	110-006343-00
3	Brake Post	48131		01 Psylo XC/SL 52 lb/in Coil Spring (Orange)	110-005592-02			
4	Flat Washer	52261		01 Psylo XC/SL 59 lb/in Coil Spring (Red)	110-005592-03	<b>Not Shown:</b>		
5	Crush Washer Kit	110-005552-00		01 Psylo XC/SL 65 lb/in Coil Spring (Gm)	110-005592-04	Pure Rebuild Kit		110-006245-00
6	Hydra Air/Hydra Coil Ext. Hardware Kit	110-005651-00		01 Psylo XC/SL 85 lb/in Coil Spring (Blue)	110-005592-05	Pure Compression Adjuster Rod Kit		110-006324-00
7	Conventional Psylo Rebound Adj. Knob	110-005603-00		01 Psylo XC/SL 100 lb/in Coil Spring (Blk)	110-005592-06			
8	Psylo Revive Kit	110-005593-00	14	Psylo Pure Tube	110-005557-00			
9	Climb-it Control Adjuster Knob	110-005558-00	15	Psylo Aluminum Preload Top Cap	110-005649-00			
10	01 Psylo SL/Race Pure Compression Assy	110-005586-00	16	Psylo SL Crwn/Str/Uprr, 1-1/8 Thrdless	110-005597-00			



1	Psylo Standard LL, Electric Gold	110-006267-14	12	01 Psylo SL/Race Rebound Assembly	110-005589-00
	Psylo Tullio LL, Electric Gold	110-005573-14	13	Psylo Race Negative Spring Assembly	110-005600-00
2	02 Psylo Race Decal Kit	110-006275-00		Psylo Race Neg. Spring Assy. (Tullio)	110-005647-00
3	Brake Post	48131	14	01 Psylo Air Tube	110-005646-00
4	Flat Washer	52261	15	Psylo Race Crwn/Str/Uppr, 1-1/8 Thrdless	110-005601-00
5	Crush Washer Kit	110-005552-00	16	All Travel Spacer Kit	110-005628-00
6	Dual Air External Hardware Kit	110-005650-00	17	01 Psylo Race Top Cap (Air)	110-005602-00
7	Conventional Psylo Rebound Adj. Knob	110-005603-00		<b>Tullio Hardware</b>	
8	Psylo Revive Kit	110-005593-00	A	Tullio Axle Kit	110-005653-00
9	Psylo Pure Tube	110-005557-00	B	Tullio External Hardware Kit	110-005652-00
10	Climb-it Control Adjuster Knob	110-005558-00	C	Tullio Lower Leg Hardware	110-005654-00
11	01 Psylo SL/Race Pure Compression Assy	110-005586-00	D	Tullio Rebound Adjuster Knob Kit	110-006343-00

**Not Shown:**

Schrader Air Valve Stem	200-005171-00
Schrader Air Cap	200-005172-00
Schrader Valve Core	620-001907-00
Pure Rebuild Kit	110-006245-00
Pure Compression Adjuster Rod Kit	110-006324-00
Psylo Race Dual Air O-ring Kit	110-006402-00



1	01 SID SL/Race Lower Leg Assy Black	110-005570-00	11	01 SID SL Pure Compression Assy	110-005586-01	Pure Rebuild Kit	110-006245-00
	01 SID SL/Race Lower Leg Assy Red	110-005570-02	12	01 SID SL Rebound Assembly	110-005589-01	Pure Compression Adjuster Rod Kit	110-006324-00
	01 SID SL/Race Lower Leg Assy SID Blue	110-005570-06	13	01 SID SL Negative Spring Assembly	110-005587-00	01-02 SID Top Cap w/out Valve	110-005551-00
2	02 SID SL Decal Kit	110-006235-00	14	01 Pure Tube SID SL	110-005557-01		
3	Brake Post	48131	15	01 SID SL Crwn/Strr/Uppr 1-1/8 ThdLss	110-005588-00		
4	Flat Washer	52261	16	01 Air O-ring Service Kit (SID)	110-003015-00		
5	Crush Washer Kit	110-005552-00	17	01 SID Top Cap (w/air valve)	110-006237-00		
6	Dual Air Ext. Hardware Kit	110-005650-00					
7	All Travel Spacer Kit	110-005628-00					
8	SID Rebound Adj. Knob	110-005603-00					
9	SID Revive Kit	110-006204-00					
10	01 Climb-it Control Adjuster Knob	110-005558-00					
			<b>Not Shown:</b>				
			Schrader Air Valve Stem	200-005171-00			
			Schrader Air Cap	200-005172-00			
			Schrader Valve Core	620-001907-00			

**Argentina**

Broni S.A.  
Phone: 54 11 4292 3000  
FAX: 54 11 4292 4453  
J.J. PASO 1260, (1832) LOMAS DE ZAMORA,  
BUENOS AIRES

**Australia**

Steve Cramer Products  
Phone: 61 3 9587 1466  
FAX: 61 3 9587 2018  
39 INDUSTRIAL DRIVE BRAESIDE, VICTORIA  
3192

**Austria**

Barisitz-Austria  
Phone: 43 0 5223 46444  
FAX: 43 0 5223 46444-14  
A-6060 Milis  
Gewerbepark 12

**Belgium**

Vertex Cycle Systems BV  
Phone: 31 23 57 18184  
FAX: 31 23 57 18606  
FLEMINGSTRAAT 100A, 2041 VL ZANDVOORT  
HOLLAND

**Bulgaria**

Rog 2000  
Phone: 3592 44 7042  
FAX: 3592 943 3445  
18, IVAN ASSEN STR.  
1000 SOFIA

**Brazil**

Pedal Power  
Phone: 55 11 3845 6997  
FAX: 55 11 3845 6377  
R. GOMES De CARVALHO 541  
SAO PAULO SO  
04547002

**Canada**

Cycles Lambert  
Phone: 800 463-4452 (Quebec)  
FAX: 800 461 1685  
100 Rue des Riveurs  
LEVIS, QUEBEC  
G6V 9G3

**Chile**

Bicicletas Belda Limitada  
Phone: 56 32 881799  
FAX: 56 32 978799  
14 NORTE 1001  
VINA DEL MAR

**Costa Rica**

Inversiones Y Sistemas Garvi  
Phone: 506 296 3383  
FAX: 506 289 7013  
P.O. BOX 4805-1000, SAN JOSE

**Croatia**

Ciklo-Centar  
Phone: 385 1 234 22 24  
FAX: 385 1 234 34 22  
JURJA VES 30A  
10000 ZAGREB

**Czech Republic**

Vanek Praha  
Phone: 42 0 312 698 1889  
FAX: 42 0 312 698 025  
CERRENY UJEZD 185, UNHOST, 27351

**Denmark**

Duell A/S  
Phone: 45 86 36 7800  
FAX: 45 86 36 7377  
MOLLERUPVEJ 3, TAASTRUP, 8410 RONDE

**Ecuador**

Bici Sport  
Phone 5932 248737  
FAX: 5932 253691  
AV DE DICIEMBRE 6327, ENTRE LOUVRE Y  
TOMAS DE, BERLANGA.LOCAL #3, QUITO

**Estonia**

Hawaii Express  
Phone: 372 6 398 508  
FAX: 372 6 398 566  
REGATI 1, 5K-102, TALLINN, 11911, Estonia  
Or  
Estonian Unidream  
Phone: 372 636 7470  
Fax: 372 636 7470  
Paavli 2A, Tallinn  
EE0004, Estonia

**Finland**

Mr. Cool OY  
Phone: 358 9 3250817  
FAX: 358 9 3250609  
LINNAUORENTIE 28, HELSINKI, 00950

**France**

Royal Velo France  
Phone: 33 325 433 730  
Fax: 33 325 43 95 95  
4 RUE DES AZALEES, P.A. SUD-CHAMPANGE  
ST THIBAUT, 10800

**Germany**

Sport Import GmbH  
Phone: 49 44 05 9280 0  
FAX: 49 44 05 9280 49  
INDUSTRIESTRASSE 41 B, EDEWECHT, 26188

**Greece**

Gatsoulis Stefanos Imports  
Phone: 30 12512 779  
FAX: 30 12533 960  
8 THESSALONIKIS STREET, NEW FILADELPHIA,  
ATHENS, T.T. 14342

**Guatemala**

BYS Importaciones S.A.  
Phone: 502 366 7709  
FAX: 502 363 3918  
18 CALLE 7-48, ZONA 10, GUATEMALA

**Holland**

Vertex Cycle Systems BV  
Phone: 31 23 57 18184  
FAX: 31 23 57 18606  
FLEMINGSTRAAT 100A, 2041 VL ZANDVOORT  
HOLLAND

**Hong Kong**

Flying Ball Bicycle Company  
Phone: 852 23813661  
FAX: 852 23974406  
201 TUNG CHOI ST. G/F, MONGKOK KOWLOON

**Hungary**

Prokero Ltd Co.  
Phone 361 331 3184  
FAX: 361 331 3184  
KALMAN IMRE UTCA 23, BUDAPEST, 1054

**Iceland**

Orninn Hjol Ltd  
Phone: 354 588 9892  
FAX: 354 588 9896  
SKEIFAN 11, P.O. BOX 8036, REYKJAVIK

**Ireland**

Madison  
Phone: 44 20 8385 3385  
Fax: 44 20 8385 3443  
BUCKINGHAME HOUSE EAST, THE BROADWAY  
STANMORE, MIDDLESEX HA7 4EA  
UNITED KINGDOM

**Israel**

Becidan Cycles  
Phone: 972 9 954 9165  
FAX: 972 9 954 9165  
92 SOKOLOV HERZELYA

**Italy**

Motorquality  
Phone: 39 02 24 951 1  
FAX: 39 02 24 951 228  
20099 SESTO S. GIOVANNI, (MI) I VIA VENEZIA,  
(ANG. VIA CARDUCCI), MILANO

## Japan

Yoshigai Corporation  
Phone: 81 6 4309 2530  
FAX: 81 6 4309 2532  
74-3 Nagata-Higashi,  
Higashi-Osaka, Japan

## Korea

OD Bike Inc.  
Phone: 82 2 474 0818  
Fax: 82 2 474 0656  
3F 379-20 SUNGNAE-DONG, KANGDONG-KU,  
SEOUL, 134-030

## Latvia

Veloserviss  
Phone: 371 750 1292  
Fax: 371 750 1298  
1/1 HAPSALAS ST., RIGA, LV-1005

## Luxembourg

Vertex Cycle Systems BV  
Phone: 31 23 57 18184  
FAX: 31 23 57 18606  
FLEMINGSTRAAT 100A, 2041 VL ZANDVOORT  
HOLLAND

## Malyasia

Gin Huat Cycle Trading  
Phone: 603 6189 1663  
FAX: 603 6189 1662  
NO. 8, JALAN INDUSTRI BATU CAVES ½  
TAMAN PERINDUSTRIAN BATU CAVES  
68100 BATU CAVES  
SELANGOR DARUL EHSAN

## Mexico

Tekno Bike & Outdoor Prod.  
Phone: 52 8 343 1550  
FAX: 52 8 343 1275  
Porfirio Diaz #469  
Col Centro CP 6400  
Monterey, NL Mexico

## New Zealand

W.H. Whorrall & Co. Ltd.  
Phone: 64 9 63 6 06 41  
FAX: 64 9 63 6 06 31  
43 FELIX ST  
PENROSE, AUCKLAND  
NEW ZEALAND

## Norway

Hallman Sports  
Phone: 46 18 56 16 00  
FAX: 46 18 50 03 22  
HALLNASGATAN 8, S-75228 UPPSALA, SWEDEN

## Panama

Distribuidora Rali S.A.  
Phone: 507 220-3844  
FAX: 507 220-5303  
VIA ESPANS EDIFICA CARCEP, P.O. BOX 87-  
0852, PANAMA 7

## Peru

Rojo Sports  
Phone: 511 447 0838  
FAX: 511 447 0838  
AV. REPUBLICA DE, PANAMA 6513, LIMA 33

## Poland

Giant Polska S.P. ZOO  
Phone: 48 22 645 14 34  
FAX: 48 22 645 14 36  
AL NIEPODLEGLOSCI 221-4, 02-087 WARSZAWA

## Portugal

Bicimax  
Phone: 351 244 553276  
FAX: 351 244 553187  
APARTADO 34, 2431 MARINHA GRANDE

## Russia

Sportex  
Phone: 7095 288 4524  
FAX: 7095 288 6888  
KUDRINSKAYA PL., 1,, P.O.BOX 33, MOSCOW,  
123242

## St. Maarten

Tri-Sport International  
Phone: 5995 43462  
FAX: 5995 43928  
8 AIRPORT BOULEVARD, SIMPSON BAY,  
NAMIBIA

## Singapore

Trekology Bikes 3  
Phone: 65 466 2673  
FAX: 65 466 7610  
24 HOLLAND GROVE ROAD, SINGAPORE, 1545

## Slovak Republic

Paul Lange Oslany  
Phone: 42 1 862 5492 344  
FAX: 42 1 862 5492 350  
MIEROVA 854/37 OSLANY, 97247 SLOVAKIA

## Slovenia

Proloco Trade  
Phone: 386 64 380 200  
FAX: 386 64 380 2022  
ENOTA KRANJ, BRITOF 96A, 4000 KRANJ

## South Africa

Coolheat (SA) (PTY) Ltd.  
Phone: 27 11 807 5282  
FAX: 27 11 807 2998  
3 RUARGH STREET, PARK CENTRAL, P O BOX  
740, JOHANNESBURG 2001

## Spain

K. Motor Dealer S.L.  
Phone: 34 9 1 637 70 97  
FAX: 34 9 1 637 72 64  
PARQUE INDUSTRIAL, EUROPOLIS EDIFICO  
BRUSELA, BLOQUE 4, NAVE 1, LAS ROZAS  
(MADRID), N/A, 28230

## Sweden

Hallman Sports  
Phone: 46 18 56 16 00  
FAX: 46 18 50 03 22  
HALLNASGATAN 8, S-75228 UPPSALA

## Switzerland

Cilo Bike Service SA  
Phone: 41 21 641 63 30  
FAX: 41 21 641 63 82  
CH. DE L'ORIO 30 A, CASE POSTALE 64, CH-  
1032 ROMANEL S. LAUSANNE

## Taiwan

Biketech Co. Ltd.  
Phone: 886 22 694 5806  
FAX: 886 22 694 6133  
NO. 12 FU TEH ROAD, 266 LANE, 37 ALLEY  
HSICHIH, TAPEI HSIEN, TAIWAN, R.O.C.

## Thailand

Probike Co. Ltd.  
Phone: 662 254 1077  
FAX: 662 254 1078  
237/2 SARASIN ROAD, LUMPINNE, PATUMWAN,  
BANGKOK, 10330

## Turkey

EBSAT  
Phone: 90 212 514 0525  
FAX: 90 212 519 4846  
EBSAT EMEK BISIKLET, EBUSSUUD CAD NO.67,  
34410 SIRKECI, ISTANBUL, 34410

## United Kingdom

Madison  
Phone: 44 20 8385 3385  
Fax: 44 20 8385 3443  
BUCKINGHAME HOUSE EAST, THE BROADWAY  
STANMORE, MIDDLESEX HA7 4EA  
UNITED KINGDOM

## Venezuela

Bike Sports  
Phone: 582 751 9709  
FAX: 582 753 5071  
CENTRO COMERCIAL IBARRA, PLANTA BAJA,  
LOCAL 3-A CALLE GARCILAZO, COLINAS DE  
BELLO, 0, CARACAS